



TEST REPORT

98, Gyoyukwon-ro, Gwacheon-si, Gyeonggi-do, 13810, Rep. of KOREA

TEL 82-2-2164-0011

FAX 82-2-2634-1008

Report No : TAK-015566

Receipt Date : Jun.03.2016

Customer : Han, Seok-Hun

Test Date : Jun.13.2016

Quality One Co., Ltd.

763, Docheogwit-ro, Docheok-myeon, Gwangju-si, Gyeonggi-do, Korea.

Sample : Flame Retardant Cushioni Foam Block (White)

Testing Date : Jun.07.2016 ~ Jun.13.2016

Testing Environment : Temperature (20 ± 5) °C, Relative humidity (40 ± 20) %

Test method : Refer to following pages

Test result : Refer to following pages

Attachment : Flow chart and Sample pictures

USAGE : QUALITY CONTROL

- NOTE :
1. The test results on this test report are only limited to the samples and sample names provided by the customer and KTR does not guarantee the quality of all products of the customer, and you can confirm the authenticity of the test report online (www.ktr.or.kr) or by using the QR code.
 2. This test report shall not be used for public relation, advertisement, lawsuit and any other purposes outside the scope of its defined usage.
 3. Only original copy (including certified copy) of the test report is valid – electronic copy (hard and/or soft) is for your reference only.

Hong Chang-ki

Prepared by Hong Chang-ki
E-mail: environchem@ktr.or.kr

Kim Sun-il

Reviewed by Kim Sun-il
Technical Manager
Tel : 1577-0091(ARS ①→④)

Jun.13.2016

Korea Testing & Research Institute

President



QR Code to verify genuineness

Electronic copy is for your reference only.

전자문서본(Electronic Copy)



TEST REPORT

Report No : TAK-015566

Sample : Flame Retardant Cushioni Foam Block (White)

TEST RESULT

Test Items	Unit	Sample	Results	MDL	Test Methods
Pb	mg/kg	-	Not Detected	5	IEC 62321-5 Ed.1.0 : 2013 (AAS)
Cd	mg/kg	-	Not Detected	0.5	IEC 62321-5 Ed.1.0 : 2013 (AAS)
Hg	mg/kg	-	Not Detected	0.5	IEC 62321-4 Ed.1.0 : 2013 (AAS)
Cr(VI)	mg/kg	-	Not Detected	0.5	IEC 62321 Ed.1.0 : 2008 (UV/Vis)
Total-PBBs	mg/kg	-	Not Detected	-	IEC 62321 Ed. 1.0 : 2008 (GC/MS)
Mono-BB	mg/kg	-	Not Detected	10	IEC 62321 Ed. 1.0 : 2008 (GC/MS)
Di-BB	mg/kg	-	Not Detected	10	IEC 62321 Ed. 1.0 : 2008 (GC/MS)
Tri-BB	mg/kg	-	Not Detected	10	IEC 62321 Ed. 1.0 : 2008 (GC/MS)
Tetra-BB	mg/kg	-	Not Detected	10	IEC 62321 Ed. 1.0 : 2008 (GC/MS)
Penta-BB	mg/kg	-	Not Detected	10	IEC 62321 Ed. 1.0 : 2008 (GC/MS)
Hexa-BB	mg/kg	-	Not Detected	10	IEC 62321 Ed. 1.0 : 2008 (GC/MS)
Hepta-BB	mg/kg	-	Not Detected	10	IEC 62321 Ed. 1.0 : 2008 (GC/MS)
Octa-BB	mg/kg	-	Not Detected	10	IEC 62321 Ed. 1.0 : 2008 (GC/MS)
Nona-BB	mg/kg	-	Not Detected	10	IEC 62321 Ed. 1.0 : 2008 (GC/MS)
Deca-BB	mg/kg	-	Not Detected	10	IEC 62321 Ed. 1.0 : 2008 (GC/MS)
Total-PBDEs	mg/kg	-	Not Detected	-	IEC 62321 Ed. 1.0 : 2008 (GC/MS)
Mono-BDE	mg/kg	-	Not Detected	10	IEC 62321 Ed. 1.0 : 2008 (GC/MS)
Di-BDE	mg/kg	-	Not Detected	10	IEC 62321 Ed. 1.0 : 2008 (GC/MS)
Tri-BDE	mg/kg	-	Not Detected	10	IEC 62321 Ed. 1.0 : 2008 (GC/MS)
Tetra-BDE	mg/kg	-	Not Detected	10	IEC 62321 Ed. 1.0 : 2008 (GC/MS)
Penta-BDE	mg/kg	-	Not Detected	10	IEC 62321 Ed. 1.0 : 2008 (GC/MS)
Hexa-BDE	mg/kg	-	Not Detected	10	IEC 62321 Ed. 1.0 : 2008 (GC/MS)
Hepta-BDE	mg/kg	-	Not Detected	10	IEC 62321 Ed. 1.0 : 2008 (GC/MS)
Octa-BDE	mg/kg	-	Not Detected	10	IEC 62321 Ed. 1.0 : 2008 (GC/MS)
Nona-BDE	mg/kg	-	Not Detected	10	IEC 62321 Ed. 1.0 : 2008 (GC/MS)
Deca-BDE	mg/kg	-	Not Detected	10	IEC 62321 Ed. 1.0 : 2008 (GC/MS)

Notes : mg/kg = ppm (parts per million)

N.D. = Not detected (<MDL)

MDL = Method detection limit



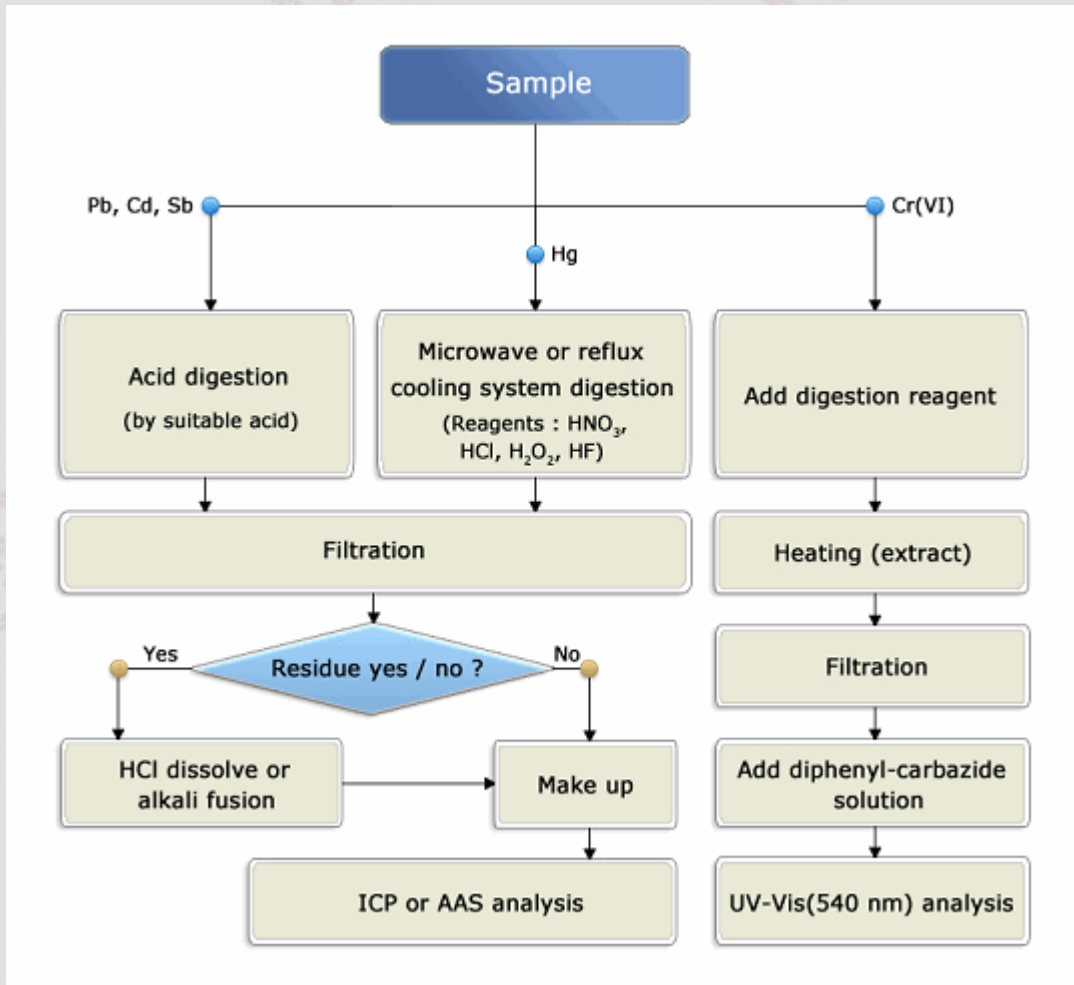
TEST REPORT

Report No : TAK-015566

Sample : Flame Retardant Cushioni Foam Block (White)

Pb, Cd, Hg, Cr(VI) : Tested by Hong Chang-ki (Tel : 02-2092-3783)

Flow chart of heavy metals analysis





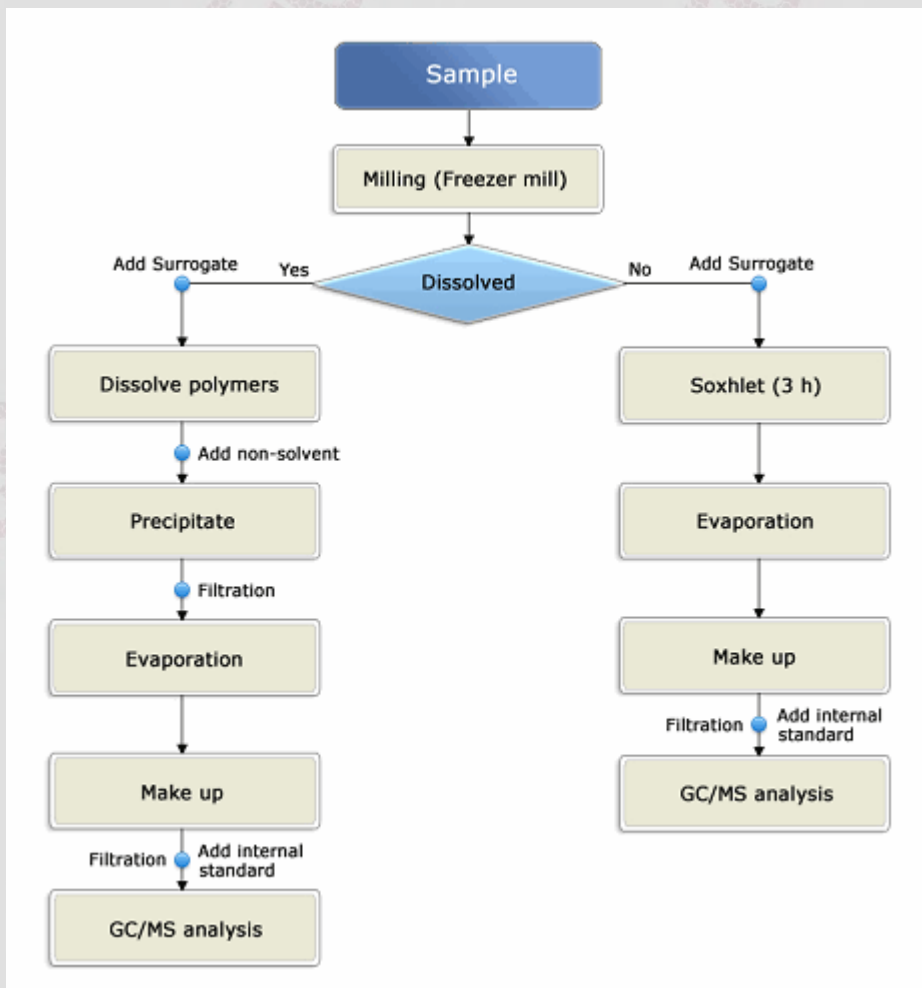
TEST REPORT

Report No : TAK-015566

Sample : Flame Retardant Cushioni Foam Block (White)

PBBs, PBDEs : Tested by Hong Chang-ki (Tel : 02-2092-3783)

Flow chart of PBBs and PBDEs analysis





TEST REPORT

Report No : TAK-015566

Sample : Flame Retardant Cushioni Foam Block (White)

Sample



- End of Report -